

# Angular Contact Ball Bearings

Bearing No. : **NACHI 7238B**

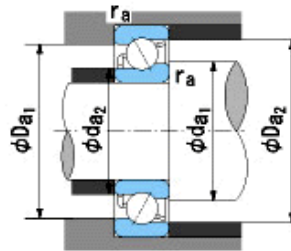
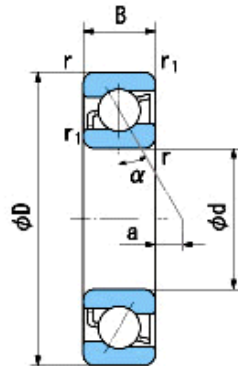
■ Bearing Type

■ Clearance

■ Tolerance Class

**Dimensions**

d = 190<sup>0</sup><sub>-0.030</sub>  
 D = 340<sup>0</sup><sub>-0.040</sub>  
 B = 55<sup>0</sup><sub>-0.300</sub>  
 r = 4~6.5  
 (Radial Direction)  
 r = 4~9  
 (Axial Direction)  
 r1 = 1.5~3  
 (Radial Direction)  
 r1 = 1.5~5  
 (Axial Direction)  
 a = 83.7



**Dimensions**

da1(min) = 208  
 da2(min) = 199  
 Da1(max) = 322  
 Da2(max) = 331  
 ra(max) = 3  
 ra1(max) = 1.5  
 Mass = 21.5 kg

Basic Dynamic Load Rating Cr :	<b>294,000</b> N
Basic Static Load Rating Cor :	<b>385,000</b> N
Limiting Speed ;	
Grease Lubrication :	<b>1,400</b> min <sup>-1</sup>
Oil Lubrication :	<b>2,000</b> min <sup>-1</sup>

	INNER RING	OUTER RING
O.D.Surface Runout with Side :		-
Axial Runout with Bore :	-	-
Axial Runout with Raceway :	-	-
Width Variation :	<b>0.030</b>	<b>0.030</b>
Radial Runout :	<b>0.040</b>	<b>0.070</b>